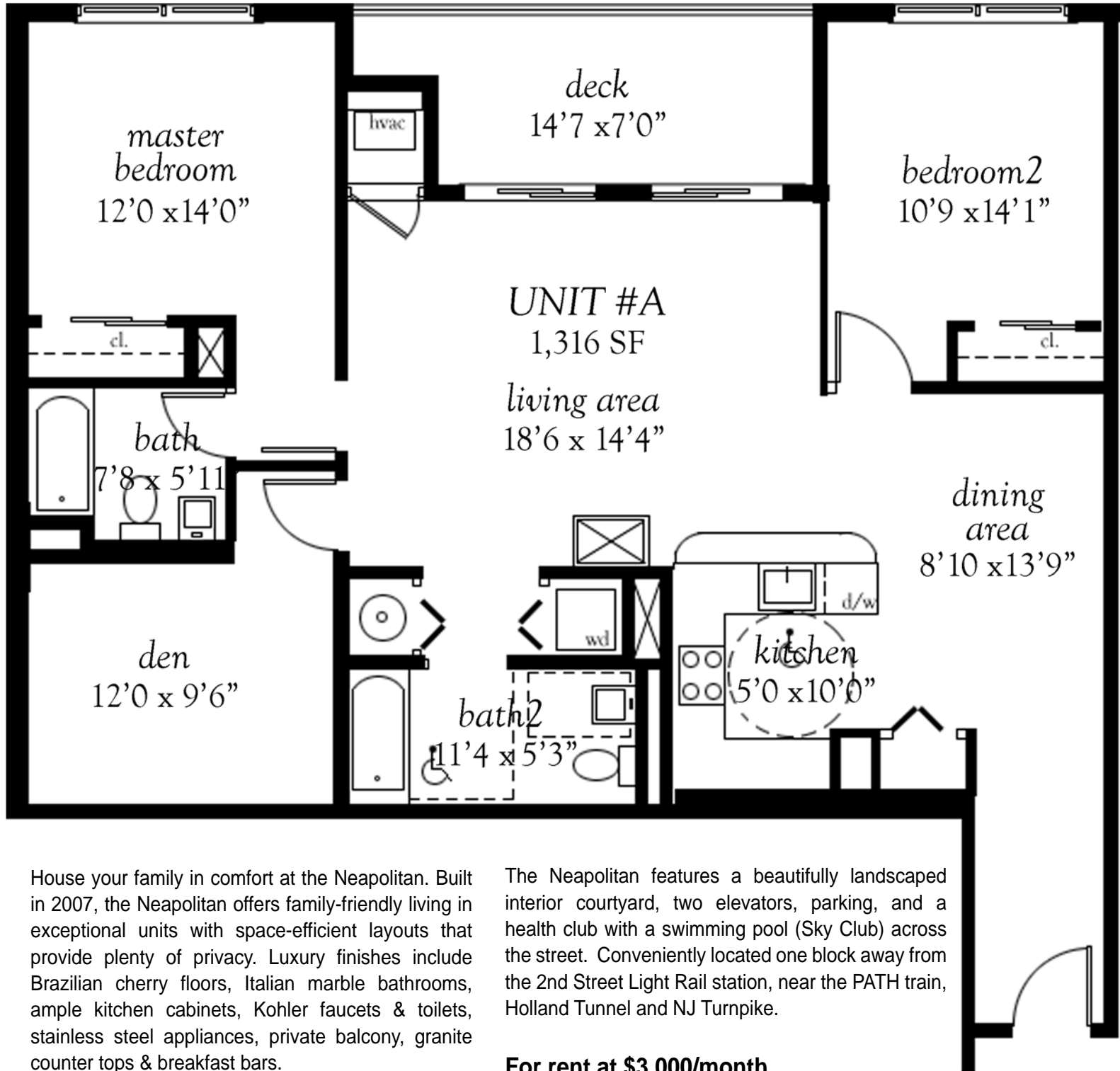


Neapolitan Unit 3A

650 2nd Street (betw Jackson & Harrison), Hoboken, NJ



House your family in comfort at the Neapolitan. Built in 2007, the Neapolitan offers family-friendly living in exceptional units with space-efficient layouts that provide plenty of privacy. Luxury finishes include Brazilian cherry floors, Italian marble bathrooms, ample kitchen cabinets, Kohler faucets & toilets, stainless steel appliances, private balcony, granite counter tops & breakfast bars.

Climate-controlled indoor garage spot included, additional spots available for \$150/month. High quality construction provides low energy bills

The Neapolitan features a beautifully landscaped interior courtyard, two elevators, parking, and a health club with a swimming pool (Sky Club) across the street. Conveniently located one block away from the 2nd Street Light Rail station, near the PATH train, Holland Tunnel and NJ Turnpike.

For rent at \$3,000/month

\$2,769/month w/13-month lease

Photos & more information at
<http://bit.ly/neapolitan3A>

